

January, 2013



The Canticle

THE
EPISCOPAL
CHURCH
WELCOMES YOU

From The Dean...

As of this writing, 81 persons have had VisionQuest interviews. This represents a significant portion of our active membership, and, as hoped, your comments and reflections are helpful and enlightening. I have examined all of the notes from the interviews several times in order to get a general impression, and we will do a more thorough analysis in the coming months to be presented at the Annual Meeting in March.

Some of my initial observations are as follows:

- +We have a large population of members that work in the medical and legal professions.
 - +We have a significant number of fluent Spanish speakers.
 - +Many express a passion for education, literacy, children's advocacy and improving the lives of our community's marginalized persons.
 - +Many respondents praise the Cathedral in the areas of music, liturgy, preaching, friendliness and hospitality.
 - +At least half of the interviews reflect great pride in one or more of our unique Cathedral ministries: Jericho Road, Real Presence, Advent House, All the Saints, (the former) Choir School, Daily Masses, and the 1928 Sunday Mass.
 - +The consistently expressed concerns/wishes were for more people in the pews on Sunday (particularly younger folks) and more broad based financial support.
- If one considers just these six themes and reflects a bit, many interesting possibilities emerge.

On behalf of the Vestry and leadership team I thank those of you who have participated thus far, and encourage those who haven't to consider doing so. You can do this by contacting Laurie Bailey via phone at (504) 895-6602 or lauriebailey@cccnola.org and indicate that you would like to schedule an interview. She will see that someone follows up with you to confirm a time that works.



*Epiphany Breakfast
Sunday, January 6
9 AM Stuart Hall*

Don't miss the fun on January 6th as we celebrate the Epiphany with an all parish breakfast. Breakfast will be served in Stuart Hall beginning at 9 o'clock.

The costume box will be brought out for a no-rehearsal Epiphany Pageant for folks of all ages. We'll need the Holy Family, shepherds, angels, wise men and narrator. we had a great pageant last year so please plan to take part.

If you can bring a bowl of fresh fruit, please sign up on one of the sheets in the back of the cathedral, chapel or posted on the bulletin board. See you Sunday, January 6th!

LECTIONARY TEXTS
(Sunday Readings)

January 6

Isaiah 60:1-6
Psalm 72:1-7, 10-14
Ephesians 3:1-12
Matthew 2:1-12

January 13

Isaiah 43:1-7
Psalm 29
Acts 8:14-17
Luke 3:15-17, 21-22

January 20

Isaiah 62:1-5
Psalm 36:5-10
1 Corinthians 12:1-11
John 2:1-11

January 27

Nehemiah 8:1-3, 5-6, 8-10
Psalm 19
1 Corinthians 12:12-31a
Luke 4:14-21

THE BANNS OF MARRIAGE

I publish the Banns of Marriage between Margaret Dilliard and Tommy Angelilio

I publish the Banns of Marriage between Amy Traylor Berry and Starr Waymack.

If any of you know just cause why they may not be joined together in Holy Matrimony, you are bidden to declare it.
- *The Very Rev. David duPlantier, Dean*



Christ Church Cathedral
Sunday Morning 10 AM Service
Live Broadcast on WGSO 990 AM Radio.
Online streaming and downloadable
podcast at www.wgso.com
Broadcasts underwritten in part by
St. Martin's Episcopal School.

EPISCOPAL DIOCESE OF LOUISIANA

The Right Reverend Morris K. Thompson, Jr., *Bishop*

CHRIST CHURCH CATHEDRAL

The Very Reverend David A. duPlantier, *Dean*
The Reverend Steven M. Roberts, *Canon*
The Reverend W. Gedge Gayle, Jr., *Priest Associate*
The Reverend Travers C. Koerner, *Priest Associate*
The Venerable Priscilla G. Maumus, *Deacon*
Ms. Laurie Bailey, *Director of Christian Formation & Communications*
Mr. Jarrett Follette, *Director of Music & Organist*
Ms. Linda Nelson, *Director of Advent House*
Mr. Chris Speed, *Parish Administrator*
Ms. Carol Butcher, *Executive Assistant to the Dean*
Ms. Suzette Follette, *Parish Secretary & Wedding Coordinator*
Mr. Charles Franklin, *Property Manager*
Ms. Shanta Humble, *Sexton*
Mr. Manuel Garcia, *Sunday Sexton*
Ms. Sharon Henry, *Nursery Worker*
Ms. Karen Landry, *Nursery Worker*
Ms. Jeanette Gilmore-Burrell *Nursery Worker*

HONORARY CANONS NON-RESIDENTIARY

The Reverend S. Chad Jones
Mr. David R. Pitts
The Reverend E. Mark Stevenson

VESTRY

2013

Boyd Fink
Bill Forman
Mary Baldwin Kennedy (Senior Warden)

2014

René Dupaquier
Earl Moreau
David O'Leary (Junior Warden)

2015

Jim Buck
Dick Moreland
Lisa Sibal, Bill Soileau

2016

Chris Beary (Treasurer)
Sam Buckley (Secretary)
Julio Figueroa

CHRIST CHURCH CATHEDRAL

2919 St. Charles Avenue
New Orleans, LA 70115

504-895-6602
504-895-6662 (fax)
<http://cccnola.org>

Submissions for Cathedral Publications are always welcome.

The deadline for Canticle articles is the 10th of the month.

Items for the February issue are due January 10.

Please e-mail submissions to lauriebailey@cccnola.org

Sunday bulletin and/or weekly e-blast announcements should be submitted **before noon on Tuesdays** to lauriebailey@cccnola.org



Find us on
Facebook



A BRIEF SUMMARY OF WHERE WE STAND ON THE APSE RESTORATION

The Apse area of the Cathedral will be closed from Monday, 14 January to Saturday, 23 February 2013. The organ will be protected and the scaffolding will arrive on Monday 14 January 2013 to kick off the restoration. Be assured that during restoration activities services will be in the Cathedral, there is room in front of the Apse area. It will be the same arrangement used when we painted the Apse before.

We have not received all of the formal quotes as of today but will have the quotes and commitments from all parties by Friday, 14 December 2012.

When we have received all the documents and commitments we will type up the schedule of events on a separate sheet. The sheet will be available to anyone who cares to follow the restoration in detail, it is too lengthy to have printed in the Canticle.

A personal thank you for all the anonymous donations that we have received to restore the Apse. To date we have received \$27,500.00.

Accumulating the verbal estimates we need \$50,000.00 to complete the project although the number could vary up to 10% once all formal commitments are made. We are short \$22,500.00 to completely fund the project. Any and all financial help to reach our goal is greatly needed and much appreciated.

- David O'Leary

Church Office Schedule

Tuesday, January 1
Office Closed
New Year's Day
12:15 p.m. Mass ~ Chapel



Monday, January 21
Office Closed
Martin Luther King, Jr. Day
12:15 p.m. Mass ~ Chapel

*Next Baptismal
Opportunity is Sunday,
January 13*
Please contact Canon
Roberts if you or your
child are a candidate for
Holy Baptism.

We wish a very Happy Birthday to all those born this month. If your name isn't listed, we don't have your date of birth in our records. Please call the church office and we'll be sure to wish you a Happy Birthday next year.

Amelia Airey
Donovan Airey
Harlan Bush
Carol Butcher
Jewel Faust
Spring Gaines
Kendall Genre
Kacie hardy
Hansel Hunt-Hudgens
Sandy Jackson
Jennifer Jones
Sam Kellum
Michael Martin



Judson Mitchell, III
Dick Moreland
Sarah Morris
Mike Nelson
Andy Pierce
Andrew Poland
Andrew Spangenberg
Laurie St. Paul
Liam Whalen
Lucille Whitley
Charles Ziegler

VESTRY NOMINATIONS FOR 2013

A Nominating Committee has been appointed by the Dean to select a slate of candidates for the election of Vestry members to be held at the annual meeting of Christ Church Cathedral parish on Sunday, March 10, 2013. Three new Vestry members will be elected to fill positions vacated by those whose terms of service will be expiring. Members of the Nominating Committee are Mary Baldwin Kennedy, chair; Boyd Fink, Bill Forman and Karyn Murphy. Biographies of all nominees will be published in the February Canticle.

In compliance with the Cathedral Charter, the congregation is reminded of the following provisions:

ARTICLE V. SECTION III, (b):

“Notice of the appointment of the members of the committee and a copy of this Section III of Article V of the Charter shall be mailed to qualified voters no later than forty-five days before the Annual Meeting. Candidates may be suggested to the nominating committee: additionally, not later than ten days before the Annual Meeting, ten qualified voters of the Corporation may submit a petition to the nominating committee to place in nomination the name of a person eligible for election to the Vestry. Not less than twenty days prior to the Annual Meeting the committee shall cause to be mailed to all qualified voters the names and brief biographies of all nominees for membership on the Vestry, whether nominated by committee or by petition. In the event that further nominations are made, either by petition or committee, less than twenty days prior to the Annual Meeting, the committee shall make every reasonable effort to provide the names and biographies of the additional nominees to all qualified voters prior to the annual meeting. At the Annual Meeting no nominations shall be permitted from the floor. The names of all candidates nominated by the committee or by petition, if the nominees are different, shall be placed on a written ballot and distributed at the Annual Meeting to the qualified voters.”

“(c) Nominees for membership on the Vestry shall be elected by the qualified voters of the Corporation at each Annual Meeting. All elections of Vestrymen shall be conducted by written ballot and shall be under the supervision of their supervisors of election, who shall be qualified voters of the Corporation, other than members of the Vestry, and who shall be appointed by the Dean at the Annual Meeting. Those nominees receiving the greatest number of votes shall be elected to fill the vacancies. For all nominees receiving such equal number of votes to be elected, the balloting shall continue between such nominees until the tie be broken and the necessary plurality be obtained.”

ARTICLE IV

I. “The membership of this Corporation shall consist of those persons whose names are now, or may hereafter be entered, on the Parish Register of the Corporation as a result of baptism, transfer, reception, or confirmation.”

II. “The voters of this Corporation at annual and other meetings of the Corporation shall possess those qualifications as may from time to time be set forth in the Canons of the Diocese of Louisiana.” [See below]

III. “The Parish Register of the Corporation shall be final and conclusive in all respects as to membership in the Corporation; and the books of the Treasurer of the corporation shall be conclusive as to the contributions of members, requisite to suffrage.”

CANON 19, SECTION 2:

“Those entitled to vote at an annual parish meeting shall be communicants in good standing of the Parish who are at least eighteen (18) years of age, and who have been contributors of record toward the support of the parish during the six (6) months next preceding the meeting.”



A great way to keep up!

<http://www.facebook.com/cccnola>

Greetings from Advent House:

The New Year is already here. With the New Year comes endings, meanwhile and beginnings. Recently, I came across a reflection I had not read for many a year. It was a strong reminder to me, that in entering the New Year, a lot of what happens to me will be connected to the choices I make. I offer the reflection to you....



Choices

An elder Cherokee Native American was teaching his grandchildren about life. He said to them, "A fight is going on inside me... it is a terrible fight, and it is between two wolves."

"One wolf represents fear, anger, envy, sorrow, regret, greed, arrogance, self-pity, guilt, resentment, inferiority, lies, false pride, superiority and ego."

"The other wolf stands for joy, peace, love, hope, sharing, serenity, humility, kindness, benevolence, friendship, empathy, generosity, truth, compassion and faith."

"This same fight is going on inside you and inside every other person, too."

The children thought about it for a minute and then one child asked his grandfather, "Which wolf will win?"

The old Cherokee simply replied... "The one you feed."

Mark your calendar: Advent House Activities:

Wednesday Lenten Quiet Days at Advent House. Dates will be February 20 and 27, March 6, 13 and 20. We will gather each Wednesday during Lent for time to stop and be still. Each Wednesday will begin with Morning Prayer and an offering for reflection at 9:30 am. Come for an hour, for the morning or for the day. More to come in the February Canticle.

Advent House Book Club will resume Monday, January 28, 2013 from 1 to 2:30pm. Book and author to be announced. Watch your Sunday bulletin announcements for more information. Please plan to join us when you can. If you have to miss a few Mondays it will not matter. Everyone is welcome.

Dream Group also continues to meet the first Monday of each month. All are welcome.

Advent House Gospel Study. Beginning on January 24, 2013, Advent House will continue to offer scripture study twice a month on the second and fourth Thursdays at 6:00 PM. Dick Moreland will convene the study group. More information in this Canticle.



Christian Yoga Changes Meeting Time

Christian Yoga class will now meet on Mondays at 5:15 pm for an hour of gentle yoga stretching and time of relaxation and meditation.

all are invited to give it a try.

Class meets in the Good Shepherd atrium (classroom) in the administrative building. Enter by the office door off St. Charles and go down the hallway; the atrium is on the right.



**Give to Christ Church Cathedral
using your Smart Phone
Scan the QR code above**

<http://cccnola.org/GIVING.htm>

JUST SHOPPING

by Deacon Priscilla Maumus

As the Christmas bills arrive and the after-Christmas sales season opens, it is useful to reflect on the activity of shopping as a moral act. There are the usual important questions to ask myself: do I really need or just desire the tantalizing item before me on the store display or on the Internet site? Could the money be spent more wisely on something else or saved for a rainy day or – even farther from my mind in most instances – should this money be donated to a cause that would alleviate suffering for someone else or help lift them out of poverty and despair?

Another question I have learned to ask, largely as the result of the practical theology I took at Loyola a few years ago, is “Does my buying this product support unfair labor practices and unjust conditions here or abroad?” In other words, am I unconsciously and inadvertently contributing to the suffering of others?

Think. Was that coffee you are drinking picked by child laborers or is it “Fair Trade” coffee? Items in your supermarket labeled “Fair Trade” are guaranteed to have been produced under good conditions both for the environment and for the human laborers. If that shirt you are wearing was made in Bangladesh, odds are that it was sewn in a sweatshop like the one that burned this past November, killing 112 workers. The factory had been refused Fire Department certification last summer, yet it was still operating, as were 25% of the other garment factories in the region which had also been refused certification. The factory that burned supplied goods to Walmart and Disney, among others.

Walmart itself has been the subject of numerous lawsuits for unjust working conditions (denying workers breaks, not paying overtime wages, discriminating against female managers). In 2005, it was forced to pay \$11 million after a raid found that it had hired undocumented immigrants, paid them substandard wages, and, often, locked them in the stores overnight.

Consequently, I no longer shop at WalMart and drive a few more blocks to another gas station and pay a few cents more per gallon rather than purchase Sam’s gasoline.

Sadly, I have also recently learned that Hershey’s contracts with companies that practice forced child labor in Africa. Young adolescents are kidnapped or lured by false promises to cocoa-producing areas, then often not paid wages and held against their will or in threat of harm. Knowing this, that Hershey’s bar or Reese’s patty looks less appealing.

How is the average consumer to make informed decisions about shopping?

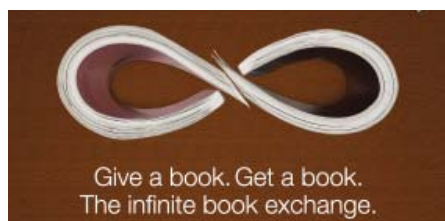
First, understand that you can make a difference. Every change starts small. Jesus had 12 disciples.

Second, visit www.globalexchange.org to learn which companies or products to avoid until the companies change their policies. You may not agree with all the issues they list, but you will find some you can agree with. Sign up for their email alerts (just the weekly ones). Also, I have a documentary DVD about the impact on Wal-Mart on a small town available for anyone who wants to view it.

Third, actively look for Fair Trade items in your supermarket. They are most likely to be found in the organic section since sustainable environment is one of the conditions for certifying a product as “Fair Trade.”

Fourth, when you shop online, look for sites that sell fair trade products. The oldest of these enterprises, Ten Thousand Villages (founded 1946) (www.tenthousandvillages.com) grew out of the Fair Trade movement’s founder’s, Edna Ruth Byler’s, commitment to using business solutions to eradicate poverty. The site offers products from craftspersons around the world.

To be an informed consumer means moving from “just (merely, mindlessly)” shopping to “just (ethical)” shopping. It means asking myself in each situation, “What would Jesus do?” When I consider that the only time Jesus is recorded in the Gospels as being outright angry is when he cleansed the Temple of the moneychangers and the sacrifice sellers who were extorting the poor, I think I know what he would ask of me as a consumer.

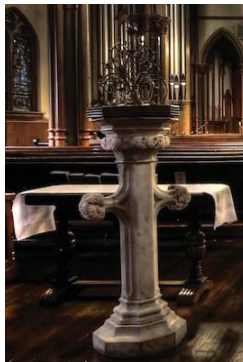


The Book Exchange is located in Stuart Hall.

Check it out!

Holy Baptism

Holy Baptism is especially appropriate at the Easter Vigil, on the Day of Pentecost, on All Saints' Day or the Sunday after All Saints' Day, and on the Feast of the Baptism of our Lord (the First Sunday after the Epiphany). It is recommended that, as far as possible, Baptisms be reserved for these occasions or when a Bishop is present. (BCP, page 312)



Our next baptismal opportunity is January 13, 2013 on Feast of the Baptism of our Lord. Please contact Canon Roberts to schedule a baptism that Sunday.

Baptism Anniversaries

Kyle Del Hierro 1/1	Sam Schieffelin 1/8
Peter Dorsett 1/1	Avery Wegmann 1/8
David Estes 1/1	Adalyn Wilson 1/8
Lynn Finch 1/1	Alexander Dadukian 1/11
Allen Zschiesche 1/1	Marlene Dadukian 1/11
Tihana Zschiesche 1/1	Helena Lazich 1/11
Addison Dodson 1/7	Clark Simcoe 1/14
David O'Leary 1/7	

Here is an up-to-date list of items that can be donated to Planet Green for Jericho Road...As the new gifts come in for Christmas be sure to recycle the old...

- Inkjet Cartridges
- Cell phones
- Pagers
- GPS
- Radar detectors
- Mobile Hot Spots
- Calculators
- Ebook Readers
- iPods
- MP3 players
- Digital/Video Cameras and Camcorders
- PDA's
- Ipads/Tablets
- Video Game Consoles & Handhelds
- Video Games & Accessories

Please place donated items in the boxes in the back of the cathedral or chapel. Many thanks!


ADVENT HOUSE, GOSPEL STUDY:



Beginning on January 24, 2013, Advent House will continue to offer scripture study twice a month on the second and fourth Thursdays at 6:00 PM. Dick Moreland will convene the study group. This series will again look at the Gospels of the upcoming Sunday:

January 24	Luke 4:14-21
February 14	Luke 4:1-13
February 28	Luke 13:1-9
March 14	John 12:1-8
March 28	No Class, Maundy Thursday
April 11	John 21:1-19
April 25	John 13: 31-35

If you are interested in a morning or early afternoon session, please contact Linda Nelson (501.258.7384; lhn@aristotle.net) or Dick Moreland (301.537.1065; dickmoreland@aol.com) and let them know.



Saratoga Street Fruit Tree Orchard invites you to

Adopt a Tree

... and help Nourish the Roots for a Sustainable Community!



Help us celebrate our anniversary by giving a \$200 gift to adopt a tree for one year.

What will my gift do?
It will help us to buy fertilizer, tools, supplies, and everything else in-between to make our baby trees grow big and tall, and to welcome our community with activities, events, and workshops. You can be a part of making our orchard grow **big, green, and beautiful!**

Adopters Receive:

- Featured name on our big, green, beautiful map.
- An adoption certificate and a special surprise.
- The joy in knowing your tree will **grow!**

Wanna Adopt? Please email your donation request to Holly Heine at hollyheine@jerichohousing.org or call (504) 895-6763.

www.jerichohousing.org

Clean those Closets!

In New Orleans, we can often take being warm for granted. We eat snowballs in October, wear shorts in November and even drive with the windows down in December. But when the temperature drops - it isn't any less cold or dangerous to those who don't have enough warm clothes. This winter help the New Orleans Mission make sure everyone stays warm by donating new or gently used clothing.

Drop off your donations at 1130 Oretha Castle Haley Blvd (go to the right side of the building on Clio Street) in New Orleans or call 504-304-5852 for free pick-up. By cleaning out your closet you'll not only be making room you'll also be giving hope to those who so desperately need it.

Thank you,
David Botner, Director
New Orleans Mission



Please note we continue to collect non-perishable foods and paper products for the New Orleans Mission. The food is distributed from the New Orleans Mission Food Bank and the paper products are used each day in the Mission's feeding ministry. Drop food and paper products off at church in the back of the cathedral or chapel.



6602; lauriebailey@cccnola.org) or Dick Moreland (301.537.1065; dickmoreland@aol.com) and someone from the team will contact you to arrange a meeting.

In addition, we intend to arrange Sundays in January and February for regular attendees at the 1928 Prayer Book Service and Real Presence to meet at the most convenient time. We advise of those times through the weekly newsletters and announcements at the services.



Visitors to the Cathedral love our Coffee Hour. They can't believe the spread of food and drink and the great hospitality. (*Much better than the coffee and donuts or cookies provided in many churches!*) Please help keep up the tradition by volunteering to host Coffee Hour one Sunday. Drinks are provided by the church and volunteers

provide their choice of food. Host with a friend or two. If you don't have time to shop and prepare food, financial donations are always gladly accepted. For additional information/volunteer, contact Kathy Boyd, 891-1360 or kboydaj@yahoo.com.

Recent Coffee Hour hosts in November: Dick Moreland, Mary & Pamela McCall, Liam & Sarah Whalen, Travers Koerner, Karla & Sarah duPlantier.

Early December hosts: Emily and Eric Nethercott, Liam & Sarah Whalen, Linda & Les Bradfield,

the Choir, Advent House Board. Many thanks! There are numerous dates open so please sign up today in Stuart Hall.



The VisionQuest Team wants to thank the 27 members of our congregation who participated as interviewers in October and November. In addition, we want to thank the 81 congregants who were interviewed. As the Dean notes elsewhere in this newsletter, the information gathered will help the Vestry and others understand what we, the Cathedral, want to do in the future and who can best accomplish those goals.

We are continuing VisionQuest into the New Year and many of our interviewers have volunteered to continue in that role. For those of you who have not been interviewed, please contact Laurie Bailey (504-895-

Women's Recovery Weekend ~ January 11 - 13, 2013 "The 12 Steps and Christian Spirituality: Connecting the Dots"

The Addictions Recovery Ministry will host our 27th annual Women's Weekend January 11-13, 2013 at the Solomon Episcopal Conference Center. Our theme for the weekend is "The 12 Steps and Christian Spirituality: Connecting the Dots".

Our facilitator for the weekend is Deacon Maggie Dawson who has served as a spiritual director for 20 years and has been involved with the Addictions Recovery Ministries for 25 years. She has been a deacon in the Diocese for 9 years. The combination of Christian spirituality and 12 Step work has been at the center of her life and faith, each informing and enhancing the other, about which she will share.

During our time together, we will have an opportunity to share Morning Prayer, Holy Eucharist, a Taize Service, 12-step meetings, Reconciliation, Spiritual Direction, and a Dream Workshop. This weekend is a great opportunity for relaxing, reflecting, renewing, and visiting. It is a wonderful gift to ask for or to give yourself.

The weekend begins with supper at 6:30 p.m. on Friday, January 11 and ends following a 12-Step Morning Prayer Service on Sunday, January 13, (about noon). You may check in on Friday January 11 after 4:00 p.m. However, participants may arrive at the Conference Center as early as 1:00 pm on Friday. On Friday night we will gather in the chapel at 7:30 p.m. to start the retreat with a celebration of the Holy Eucharist.

The cost of the weekend is \$152 per person and includes a room for two nights, Friday night supper, three full meals on Saturday, and breakfast on Sunday. Sunday lunch is not provided. Check out time on Sunday is 10:00 am. A \$76 non-refundable deposit is required and should be sent along with the attached registration form no later than January 01, 2013 requests received after that date may not be able to be honored.

All rooms at the Conference Center are double occupancy. Single rooms may be requested but are not guaranteed. The cost of a single room for the weekend is an additional \$46 or a total of \$198. Single rooms will not be assigned until after the final registrations are received and the weekend census is known. Single rooms will be assigned on a "first come, first request" basis and no one will be turned away in order to accommodate those who desire a single room.

Please let us know if you have any special dietary needs. Handicap accessible rooms are available.

For more information <http://www.eventbee.com/v/secc/event?eid=979044203>.

CONTEMPLATIVE LIVING SEMINAR



The Rev. Dr. Tilden Edwards, Episcopal priest and founding director of the Shalem Institute for Spiritual Formation and author of numerous books including *Living in the Presence* and *Embracing the Call to Spiritual Depth*, presents "Coming Home: Embracing the Call to Spiritual Depth". This well-known spiritual mentor will offer an experientially-based retreat

experience, with several guided meditations.

The seminar is sponsored by the School for Contemplative Living (thescl.net) and will take place February 22nd (6-9) and 23rd (10-3) in 2013, in New Orleans. The cost is \$60.

For more information, contact Dr. William Thiele at 504.899.3431, William.thiele56@gmail.com, or Deacon Maggie Dawson at 504.837.0877, mgdrake@juno.com.

To Register: Make your check out to Parker UMC, write "SCL" on the memo line, and mail it to Parker UMC, 1130 Nashville Ave., New Orleans, LA 70115. Please include your e-mail address so that you can be notified when the location is known.

ALTAR FLOWERS

Please help us make our worship spaces even more beautiful by ordering flowers to memorialize or honor your loved ones, or to say thank you for blessings received. To do this, either sign up on the Flower Sheet at the entrance to Stuart Hall, or E-mail wyattpump1@aol.com, or call Sue Blankingship at 885-0773.





November 6, 2012

The Very Rev. David Duplantier
Christ Church Cathedral
2919 St. Charles Avenue
New Orleans, VA 70115

Dear David:

Thank you for your generous donation of \$500 to our *Lunch with C. S. Lewis* ministry. Please let the good folk of Christ Church know that we appreciate their partnering with us in this way. So far, we have hosted nine lunches this fall semester, feeding about one hundred and fifty students each week. This semester, we began a discussion of prayer and the Book of Psalms using Lewis' short book Reflections on the Psalms. A free copy of the book is made available to every student who would like one. And I always let the students know who has sponsored their meal.

This weekly gathering changes with each semester. Students graduate, or their schedules change. New students arrive to check us out. Many students return for a fourth or, in a few cases, a fifth year of attending. The new mix of students means that I'm never quite sure who I'll be speaking to, which keeps me on my toes.

Your generous donation will enable us to continue to extend this open invitation to the students of LSU. These lunches give our most involved students the opportunity to host their friends in their church home. This ministry also contributes to the general impression that students, staff, and faculty have of St. Alban's as a warm and friendly church. At a state-run university, that positive impression is extremely important.

If you would ever like to join us for a lunch, we would love to have you be our guest! These gatherings will continue through the semester every Wednesday (11:30 – 12:15).

Faithfully yours,

The Rev. Andrew S. Rollins
Chaplain

*Senior High Youth Rally
January 18-20, 2013
Solomon Episcopal Conference Center*



“Love from the Inside Out”

Join us as we talk about how we are loved, how we love others, and how we respond to love in our lives. We will talk about the love that Jesus has for us and for the world, and how we see that love present and living. Guest musician Sam Hensley from Roanoke, VA, will be with us for the weekend and the staff will be made up of youth and adults from the Diocesan Youth Leadership Committee. The weekend will also allow for time to play, relax, and have fellowship with other high school youth from around the Diocese of Louisiana. The cost of the weekend includes double occupancy rooms, all meals, t-shirt, group photo, and all activities for the weekend.

Registration & Event Information: www.solomoncenter.org
Cost: \$150 until January 7th and \$175 from January 8th-January 17th
The weekend is open to any youth in grades 9-12

Detailed information about the weekend, including what time to arrive, what to bring, the community covenant, and how to request financial assistance, is available on the Event Registration Page on the Solomon Center website.

For more information or specific questions please contact:
Amelia Arthur, Coordinator for Youth & Young Adult Ministries
aarthur@edola.org or (504) 895-6634 ext. 226.

The Canticle

January, 2013



Holiday Party

Friday, January 4

5:30 - 7:30pm

Penthouse Room at

Lambeth House - 12th floor


150 Broadway

Puttee Holladay, hostess

Adults only, please.

Place Address Label Here

Non-Profit Org.
Postage Paid
New Orleans,
LA
Permit No. 72


CHRIST CHURCH CATHEDRAL
2919 St. Charles Avenue
New Orleans, LA 70115
<http://ccnola.org>

Return Service Requested